



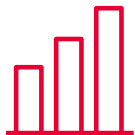
WELCOME TO THE DOW STADE SITE



This Is Dow

Every answer starts with asking the right question.

At Dow, these questions and the pursuit of solutions for the world's toughest challenges inspire us to collaborate and use our materials science expertise to create innovative solutions that transform our world and deliver a sustainable future.



2022 NET SALES

\$57B



EMPLOYEES

~35,700



MANUFACTURING SITES

104 sites



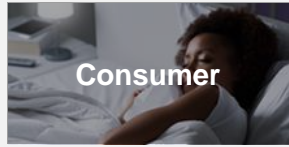
GLOBAL REACH

31 countries

in which Dow manufactures products

Industry Trends and Sustainability Enable >\$800B Addressable Market

Market Verticals



Key Growth Drivers

- Circular and renewable
 - Societal food waste reduction
 - Downgauging / Lightweighting
-
- Decarbonization of electricity
 - Building efficiency
 - Longevity
 - Connectivity
-
- Safer materials
 - High-efficiency end-products
 - Circular and renewable
-
- Electrification and autonomous
 - Lightweighting
 - Circular and renewable
 - Reduced noise, vibration

Dow Participation Highlights



Packaging to enable freshness enroute and on the shelf



Elastomers, fluids, composites and silicones enabling wind and solar power



Recycling of end-of-life consumer products into raw materials for re-use



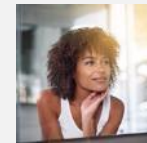
Silicones, urethanes, and acrylics enable weight reduction and improve fuel efficiency



Packaging solutions made with bio-based feedstocks



Materials that enhance the efficiency of high-perf. buildings



Bio-based home and personal care ingredients



Battery assembly materials for safe and reliable EV & AV designs

\$650B

Today

Addressable Market

>\$800B

2025 & beyond

Well-positioned to capture growth from industry trends and sustainability drivers in key markets

Produktion-Sites



STADE

- Chlorine electrolysis plant is the basis for the production of chlorine, caustic soda and hydrogen used in everyday products



AHLEN

- Polyurethane system house for the production of hard and soft foams



BOMLITZ

- Competence Center for Cellulosics



MITTEL-DEUTSCHLAND

- The "heart" is the cracker, which produces ethylene and propylene from gasoline
- long tradition in plastic production



WIESBADEN

- Germany headquarter
- Silicone production by Dow Corning

DOW IN STADE



1968

- Availability of Salt
- Deep Sea Harbor
- Availability of Energy



TODAY

- High level of Environmental and Safety Performance
- Highly qualified Employees
- Competitive Energy Concept
- Production Plants highly integrated
- High Reliability

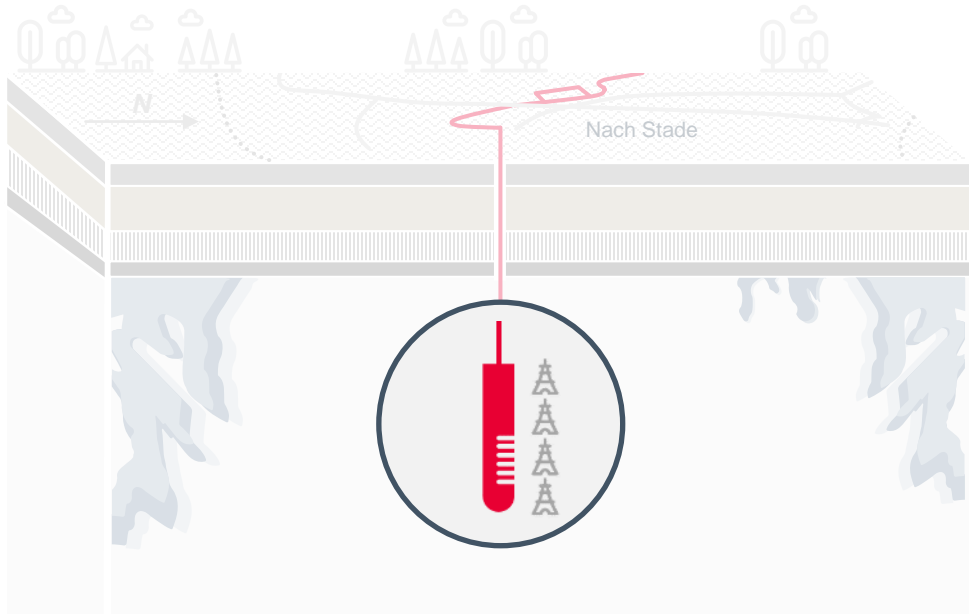


Zahlen & Daten

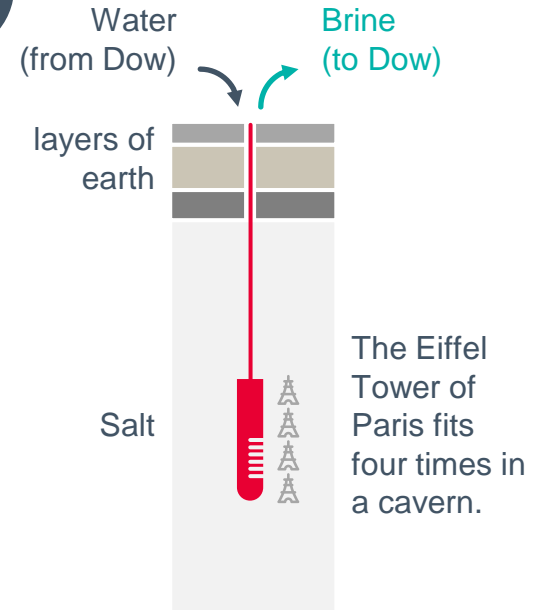
- Productionvolume: ~ **4 Mio. t.** in 2021
- Total Investment: ~ **3.5 Bn. Euro**
- Employees Dow: ~ **1.100**
- 3. largest port in the state: + **6.5 Mio. t.**



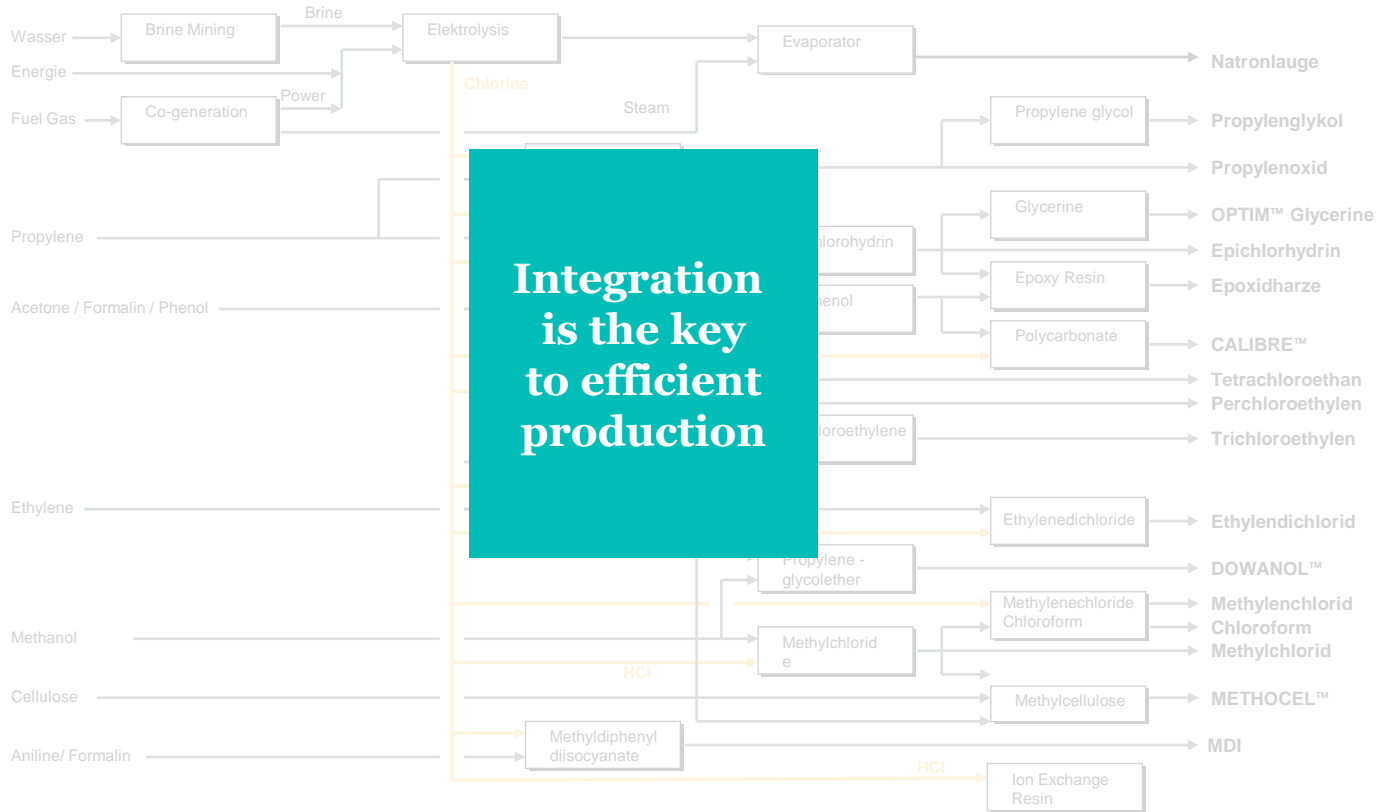
MINING AND STORAGE OPERATION IN OHRENSEN



- Annual Output: ~ **3,6 Mio. t.** salt
- Drilling Depth: ~ **max. 2 km** – in 12 caverns
- Volume: ~ **3,6 Mio. m³** of the largest cavern



INTEGRATION



**Cooperation,
innovative**

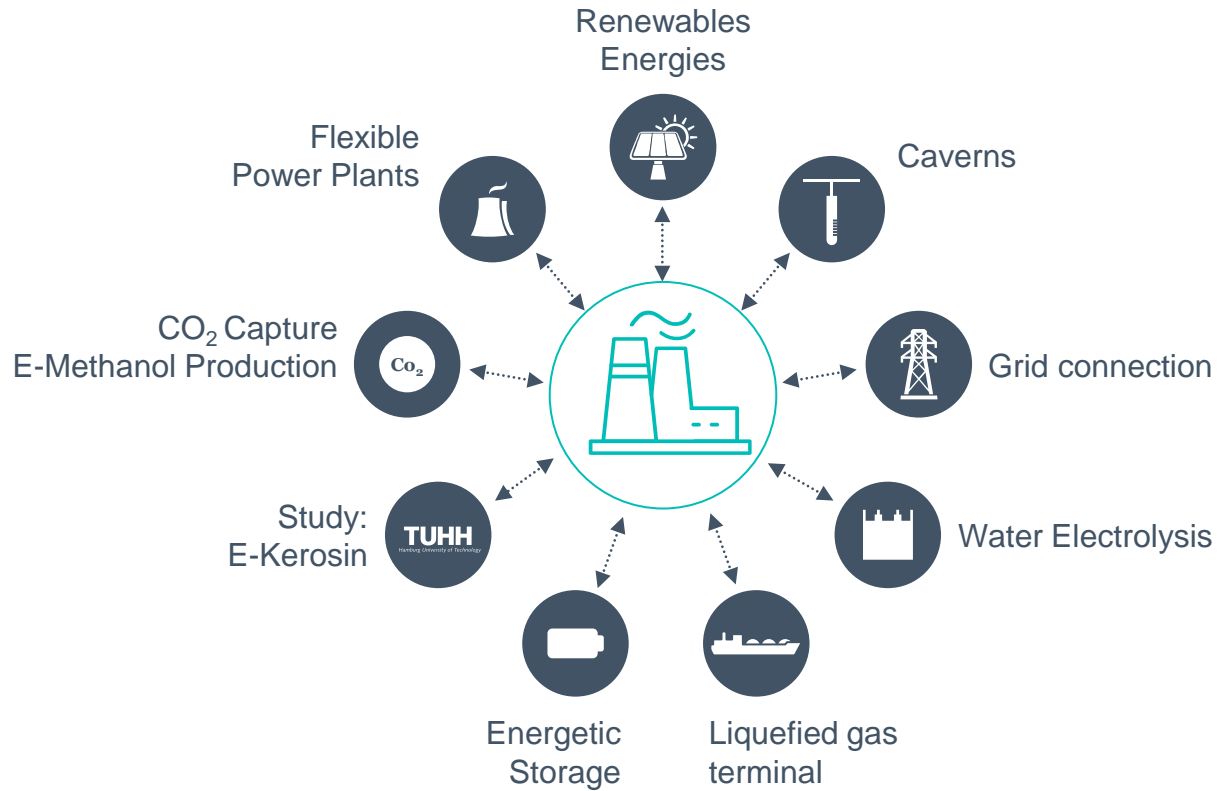
I-PARK STADE



Our Success

- Highly efficient infrastructure
- Competitive services
- Highest occupational safety and environmental protection standards
- Reliable energy supply

FUTURE CONCEPT: ENERGY





Seek

Together™